



## **Drainage channels that withstand the elements.**

### **Client: Thundaflo**

### **Background:**

Thundaflo is a Rotorua-based company specialising in channel drainage systems. With a focus on quality and durability, Thundaflo has been providing top-of-the-line drainage solutions across Australasia for over a decade.

### **Challenge:**

Thundaflo's drainage systems are designed to be long-lasting and able to withstand even the harshest weather conditions. However, creating a product that meets these high standards can be challenging. Thundaflo's drainage channels, which can be up to 3000mm long, require precision manufacturing and attention to detail.

### **The Solution:**

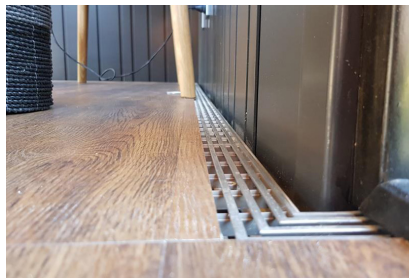
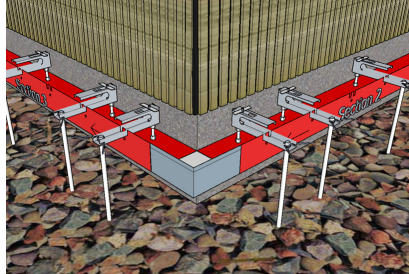
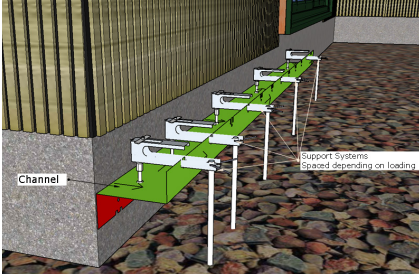
Thundaflo's drainage channels are laser-cut from galvanised steel and folded with a press brake, ensuring accuracy and consistency in every product. The use of galvanized steel also ensures that the drainage channels are resistant to rust and corrosion, making them ideal for use in any environment.

To ensure that every product meets the customer's unique needs, Thundaflo frequently relies on the expertise of Replika's designer, Alex, for design assistance. With Alex's help, Thundaflo can create custom brackets and end caps that fit seamlessly with their drainage channels.

Thundaflo often picks up their orders directly from the Replika workshop in Penrose, but if required, Replika deliver to Thundaflo project sites around the country, or directly to the Thundaflo warehouse in Rotorua. This flexibility ensures that Thundaflo can get the products they need, where and when they need them.

**Contact us today to learn more about our metal production capabilities.**  
**09 636 0155 / [josh@replika.co.nz](mailto:josh@replika.co.nz) / [www.replika.co.nz](http://www.replika.co.nz)**

### Project Photos:



3D Design



Laser Cutting / Punching



Folding



Laser Welding



Finishing



Fabrication



Delivery

Contact us today to learn more about our metal production capabilities.  
09 636 0155 / [josh@replika.co.nz](mailto:josh@replika.co.nz) / [www.replika.co.nz](http://www.replika.co.nz)